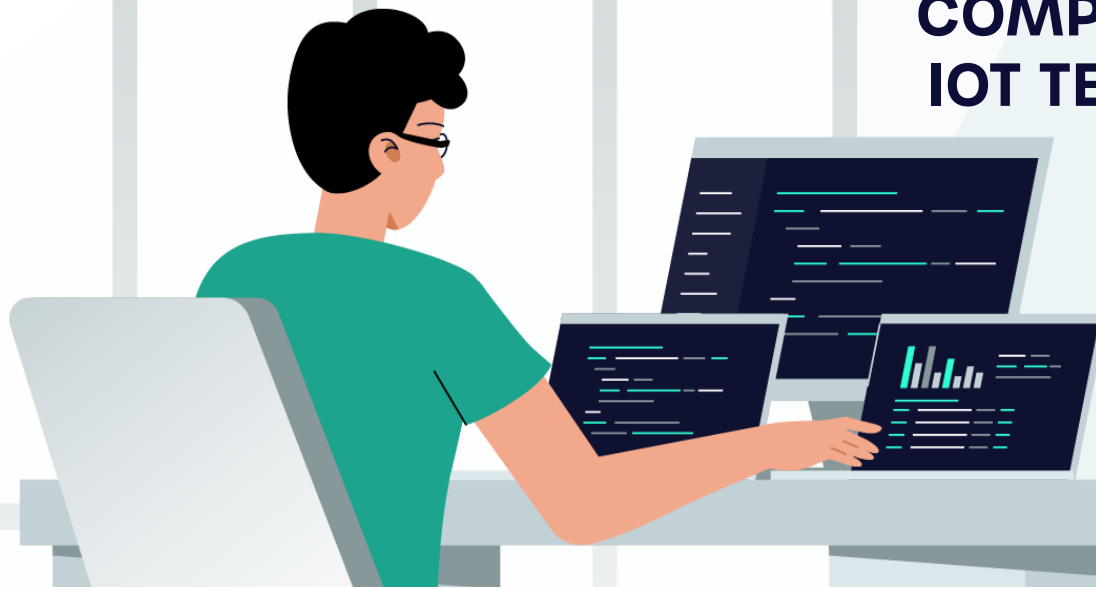


# COMPREHENSIVE IOT TECHNOLOGY PLATFORM



## Build with KoreLock® Inside.

KoreLock offers a patented IoT technology platform that includes firmware and PCBAs, mobile apps, cloud infrastructure for remote monitoring and control, and seamless cloud-to-cloud APIs integration with third-party access control applications.



### WI-FI CLOUD ACCESS

Our patented, power-saving Wi-Fi technology provides enhanced intelligence for access control that extends battery life while operating on existing Wi-Fi networks.



### LOCK FIRMWARE

Deep access control feature set including access users, guest users, schedules, auto-lock and passage modes and other lock settings.



### BLUETOOTH LOCAL ACCESS

Secure Bluetooth® functionality, including lock/unlock, user management, settings, history and mobile credentials.



### MOBILE APPS

Use our smart offline credentials including mobile credential and algorithmic PINs in non-connected environments.



### CREDENTIAL FLEXIBILITY

Support for multiple types including pin codes, temporary guest codes, algorithmic codes, cards and mobile credentials.



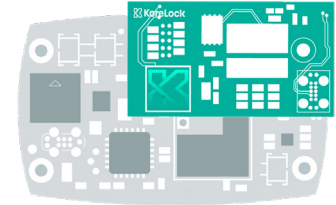
### SECURE ENCRYPTION

Industry-standard security technologies, including SSL/TLS, 2048-bit public/private key encryption, and secure registration flows.

## KORELOCK MODULE FUNCTIONAL SPECIFICATIONS

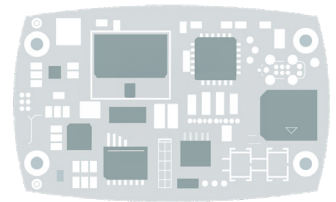
Best-in-class, tested, and proven with over 75,000 installations worldwide.

|                                     |  |
|-------------------------------------|--|
| Users (PINs & Cards)                | Up to 3,300  |
| Audits                              | Up to 4,900 events stored on lock if offline.  |
| Supported Credentials               | User PIN, Temporary Guest PIN, Temporary Algorithmic PIN, and Mobile Credentials. Support for card credentials available (host hardware card reader required).   |
| Passage Modes                       | Passage Mode and Auto-Lock Mode  |
| Schedules                           | <ul style="list-style-type: none"> <li>Lock Schedule (lock/unlock weekly schedule)</li> <li>Up to 63 Access Schedules (M-F, 9-5)</li> <li>Up to 63 Access Exception/Holiday schedules</li> <li>Passage Mode Schedules (alter between passage and auto-lock)</li> </ul> |
| Programming                         | Via keypad, over BLE or Wi-Fi.   |
| Lockout                             | Defaulted to 5 incorrect entries, field configurable   |
| Hardware                            | Nordic Semiconductor nRF52840, Espressif Systems ESP32-S2-MINI-1   |
| Communication Standards             | <ul style="list-style-type: none"> <li>2.4 GHz Wi-Fi (IEEE 802.11 b/g/n)</li> <li>WPA, WPA2</li> <li>HTTPS encrypted with TLS</li> <li>UDP channel with AES-128 encryption</li> <li>Bluetooth® low energy (version 4.2)</li> </ul>                                     |
| WiFi Connection Interval            | Intermittent Wi-Fi connectivity defaults to every hour and when keypad pressed. Connection interval can be adjusted between every 5 minutes to 1x per day. Always on connection possible with optional external power supply.  |
| OTA (Over the Air Firmware Updates) | Available for Wi-Fi and BLE modules via BLE (delivered by mobile app) and over Wi-Fi.  |
| Security                            | Mutually-authenticated TLS 1.2 with 2048-bit keys.   |



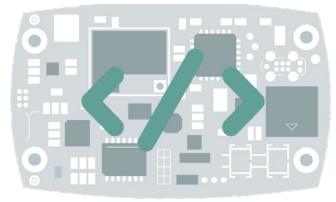
### KORELOCK MODULE

Embedded Smart Lock on a chip with full-featured firmware, Wi-Fi for cloud connectivity and BLE for local control.



### CUSTOM PCBAS

Work with KoreLock to embed supported processor, Wi-Fi and BLE modules onto custom PCBA to fit specific hardware.



### FIRMWARE LICENSE

Build your own PCBAs with supported hardware and license KoreLock firmware and app support.

