

US 20230419753A1

(19) **United States**

(12) **Patent Application Publication**  
**Mondrow et al.**

(10) **Pub. No.: US 2023/0419753 A1**

(43) **Pub. Date: Dec. 28, 2023**

(54) **INTELLIGENT LOCK**

(71) Applicant: **KoreLock, Inc.**, Englewood, CO (US)

(72) Inventors: **Nolan Mondrow**, Englewood, CO (US); **Robert Goff**, Golden, CO (US); **Ewe Chye Tan**, Denver, CO (US)

(52) **U.S. Cl.**

CPC .... *G07C 9/00309* (2013.01); *H04W 52/0248* (2013.01); *G07C 9/00571* (2013.01); *G07C 9/00857* (2013.01); *G07C 9/00904* (2013.01); *G07C 2009/00428* (2013.01); *G07C 2009/00865* (2013.01); *G07C 2009/00888* (2013.01); *G07C 2009/00365* (2013.01)

(57)

**ABSTRACT**

A method for operating an access control comprises creating a plurality of wake-up schedules for a wireless transceiver. Each of the plurality of wake-up schedules may be configured to control how frequently the wireless transceiver

## THE KORELOCK PATENT PORTFOLIO

(63) Continuation of application No. 18/049,137, filed on Oct. 24, 2022, which is a continuation of application

## GAIN A COMPETITIVE EDGE AND DIFFERENTIATE YOUR PRODUCTS WITH KORELOCK PATENTED TECHNOLOGY

KoreLock's portfolio of 'Intelligent Lock' patents offers distinct advantages in data transmission and power savings. Through adjustments to the lock's transceiver wake-up schedule and signal strength, KoreLock's Smart Lock technology enhances performance, providing a significant advantage in the market and overall operational savings.

The patented IoT technology platform from KoreLock effectively balances power conservation and connectivity by recognizing user access attempts and updating the lock's wireless transceiver operating schedule based on user patterns. These features ensures a personalized and efficient experience.

By teaming up with KoreLock, lock manufacturers can integrate Smart Lock intelligence into their devices to:

- Reduce power consumption and improve performance,
- Enhance functionality and elevate the user experience, and
- Stay at the forefront of technological advancement.

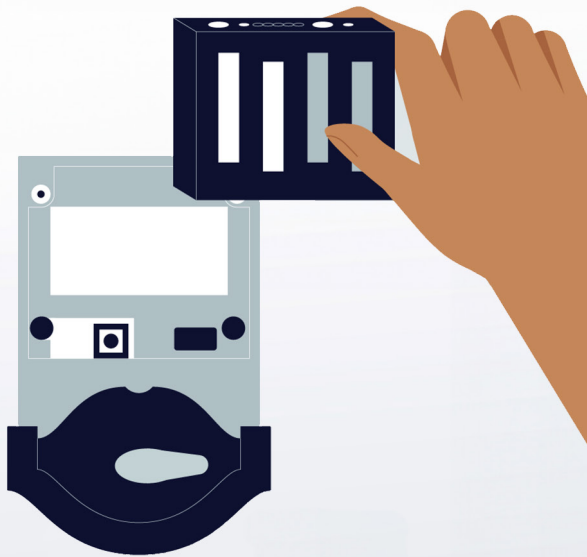
“  
**No other  
WIFI-enabled  
lock has  
this level of  
sophisticated  
intelligence  
or power  
longevity.**

”

— Robert Goff, KoreLock Co-Founder, VP Product, and Patent Author.



**KoreLock®**  
INSIDE



By investing in and developing new patents, KoreLock positions our partners to offer competitive cutting-edge solutions – and stay ahead of the market.

## **CHOOSING A TECHNOLOGY PARTNER WITH PATENTS: WHY IT MATTERS**

### **Demonstrates Expertise and Innovation**

KoreLock's patented technology has undergone a rigorous process, highlighting unique ideas, technical advancements, and superiority over existing methods.

### **Protection of Intellectual Property**

Partnering with KoreLock's patented technology not only grants legal rights but also safeguards a manufacturer's investment, protects confidential information and trade secrets, and provides a unique selling point in the market.

### **Access to Exclusive Technology**

Incorporating KoreLock's patented technology differentiates products from competitors, giving a valuable edge in the market, elevating functionality, and enhancing the user experience.

### **Collaboration and Licensing Opportunities**

KoreLock's patents open doors for partnerships through licensing agreements, allowing manufacturers to leverage our technology and innovations to meet their specific needs, fostering a mutually beneficial relationship.

### **Assurance of Quality and Reliability**

Patents require a thorough examination of novelty, usefulness, and effectiveness, ensuring confidence in the performance of KoreLock's IoT Smart Lock technology.

### **Future-Proofing and Long-term Collaboration**

KoreLock's patented technology demonstrates a dedication to research and development, enabling adaptation to changing market needs and positioning products for long-term success.

Are you interested in developing new tech-competitive IoT Smart Lock products? Contact [info@korelock.com](mailto:info@korelock.com) to get started.